

Historic Dutch Shipwreck Imaged

Den Hagg, Holland

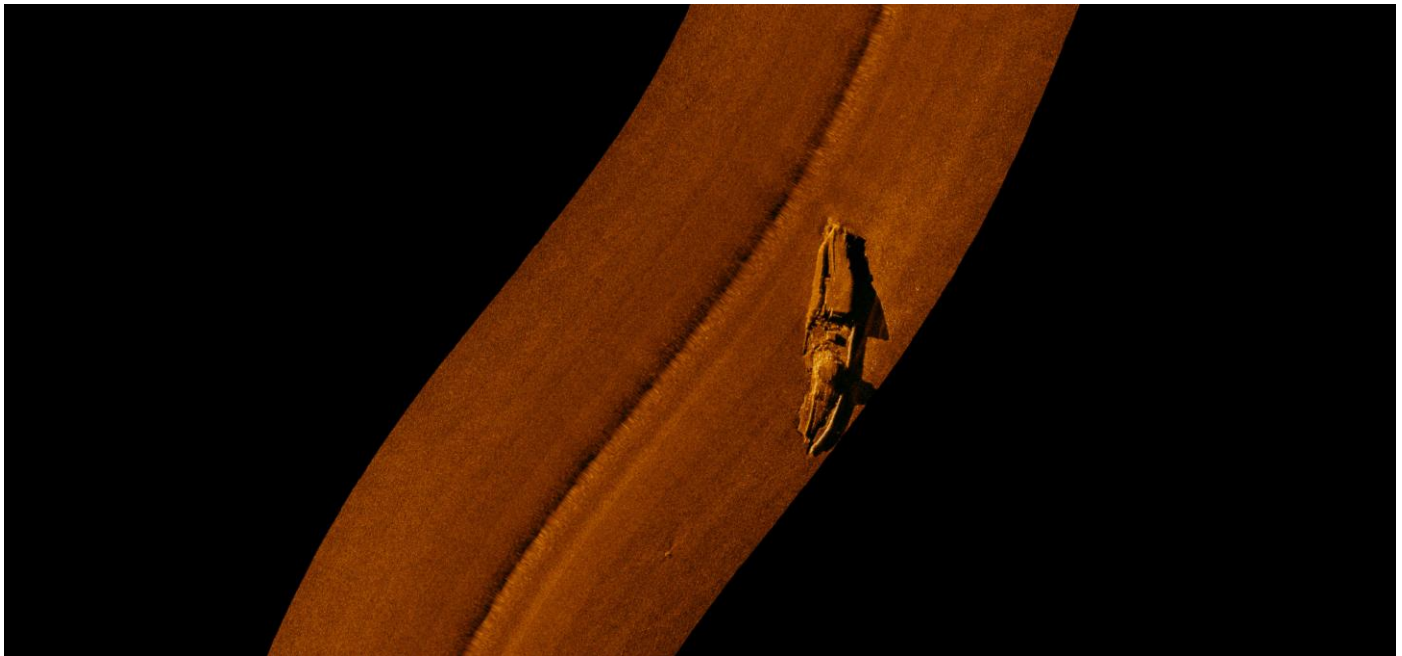
While performing a demonstration of a Klein 5000 Side Scan Sonar for RWS (Rijkswaterstaat) the historic shipwreck of the Adder was imaged and processed in SonarWiz 5. The Adder sank in 1882 off the coast of Scheveningen, Holland with great loss of life.

Sonar Type: Klein 5000 Side Scan Sonar



Water depth: 20 meters

Ship speed: 4.7 knots



SonarWiz 5 Mosaic of Adder Wreck

Submitted by:

Garry Kozak

Klein Associates

<http://www.1-3klein.com/>