

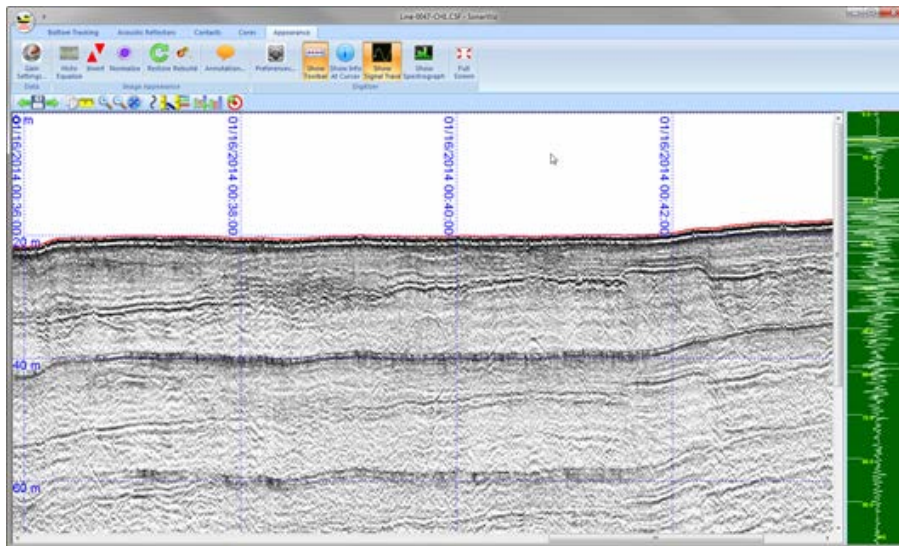
FOR IMMEDIATE RELEASE



## Chesapeake Technology Now Offers a 24-bit Analog Sub-Bottom SonarWiz Interface

**Chesapeake Technology Inc.** (CTI), a world leader in real-time sonar acquisition and GIS based processing software for seafloor mapping, is pleased to announce a new 24-bit analog sub-bottom SonarWiz interface (SBP24) for high resolution geophysical surveys.

SBP24 provides extremely high resolution 24-bit data at sample rates from 10 to 100kHz per channel for up to 2 channels over a standard USB 2.0 interface. Digitized data is stored in standard SEG-Y floating point format. The 24-bit data sampling provides greater dynamic range and the increased sampling rates allows for higher resolution of fine scaled sub-bottom reflectors.



AA300 boomer plate, CSP-P capacitor bank, AH250/12 Hydrophone array, 250 joules at 3hz  
Data courtesy David King, Marine & Earth Sciences Pty Ltd

CTI offers custom software and hardware solutions to the marine geophysical and seafloor mapping industry for over 20 years. Through its developments in marine surveying technology & solutions, CTI has become the standard for navies, government agencies, survey companies and universities around the world.

For more information please contact CTI at [info@chesapeaketech.com](mailto:info@chesapeaketech.com).

Media Contact:

Eileen Gann

+1 650.967.2045

[etgann@chesapeaketech.com](mailto:etgann@chesapeaketech.com)

[www.chesapeaketech.com](http://www.chesapeaketech.com)

###